

ROCKEY 200

advanced smart card reader



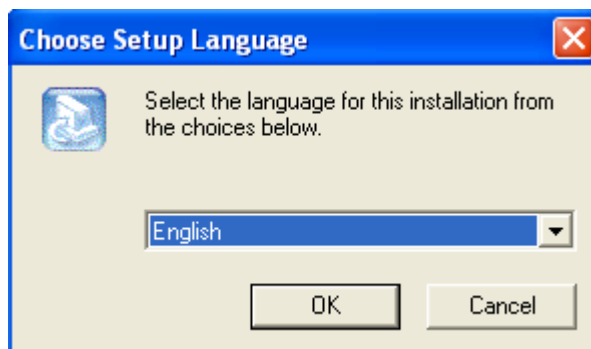
ROCKEY200's Installation Guide

A. Installation Instructions

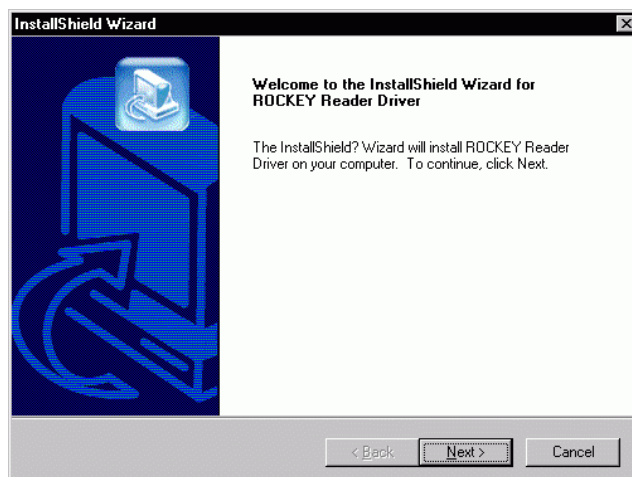
1. Insert ROCKEY200 CD-ROM into the CD-ROM drive

Important : Do not attach ROCKEY200 to the PC before completed driver installation

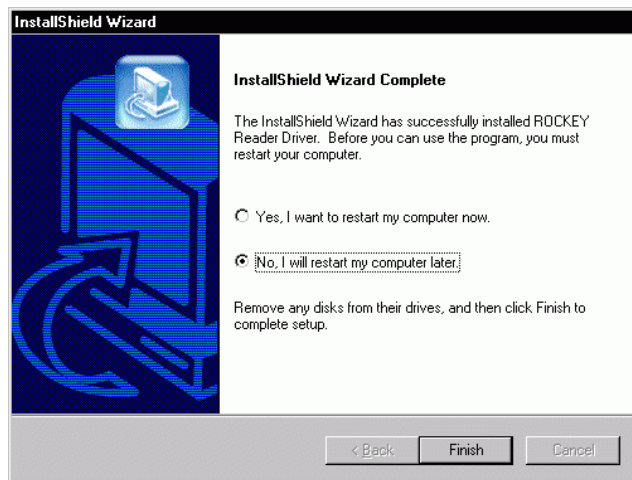
2. Double click on the ROCKEY200 driver installer (for Windows user double click on CD-ROM Drive/Install.exe)
3. Choose Setup language, default is English and click "OK" to continue



4. Installation Wizard will then start, click "NEXT" to proceed



5. Upon successful installation, it will prompt to restart your system. For Window 98 or ME, you MUST restart your system in order to activate ROCKEY200 driver. For Window 2000/XP, no restart is necessary. Select your option and click "FINISH" to end the installation



Important : Attach ROCKEY200 to the PC only after finish installing the ROCKEY200 driver and after PC is completely restarted.