

ROCKEY 200

advanced smart card reader



ROCKEY200's Tester

Important : Please make sure ROCKEY200's driver is properly installed before you use this tester.

How to Use the Test Program for ROCKEY Card Reader

ROCKEY provides a PC/SC tool. The tool allows you to send instructions directly to the Reader, and obtain responses to those instructions.

Run the Test.exe in the ROCKEY200 CD-ROM. The "Select reader" window will appear. See figure 1.1:

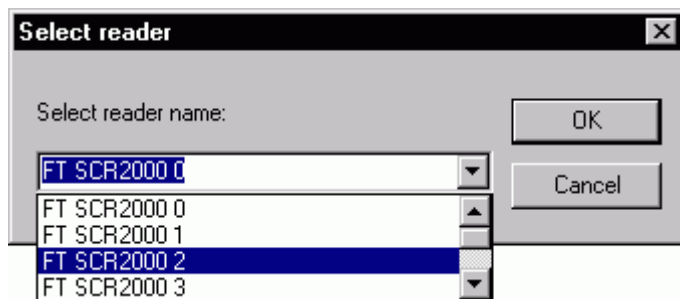


Figure 1.1 Select reader

Choose FT SCR2000 0 from the pull down list. Then click the "OK" button to enter the main window of the test tool. See figure 1.2.

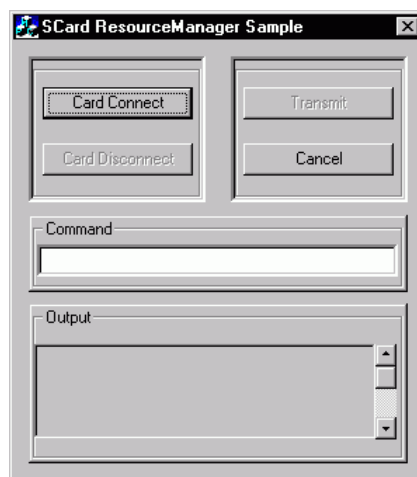


Figure 1.2 PC/SC test tool main window

Note: All the smart card operation information will be displayed in the Output box.

Click "Card Connect" button before you perform any operations on the smart card. If the connection is successful, you may press the Card Disconnect button and Transmit button. If the connection fails, read the information in Output box to find out the reason.

After a successful connection, the transport protocol supported by the smart card will be displayed in the Output box. (i.e. T=0 and T=1) See figure 1.3:

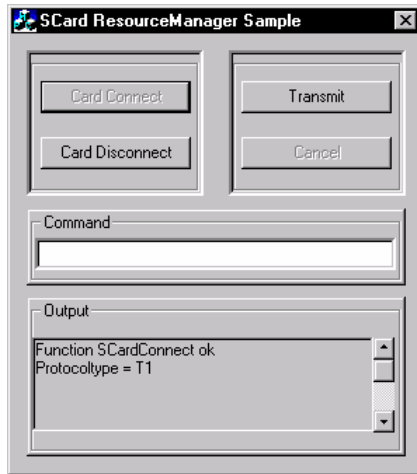


Figure 1.3 Connection with smart card succeeded

You may send instructions to smart card now. Write your instructions in the Command box (such as 0084000008) and then click the "Transmit" button to send your instructions to smart card.

The operation results will be displayed in the Output box. Please refer to your smart card reference materials to find out the meaning of the response.

Figure 1.4 displays return result "4a0c7a25171595019000" for instruction "0084000008".

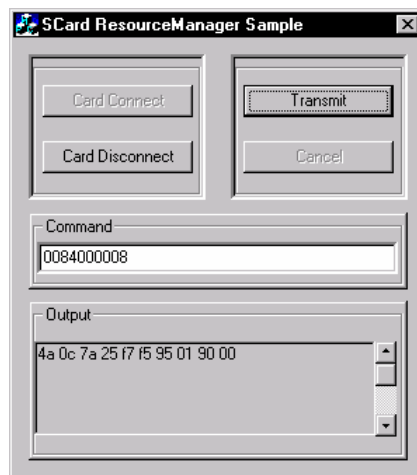


Figure 1.4 Send instruction and return result

Click "Card Disconnect" button to break the connection with the smart card. See figure 1.5. Then click "Cancel" button to exit.

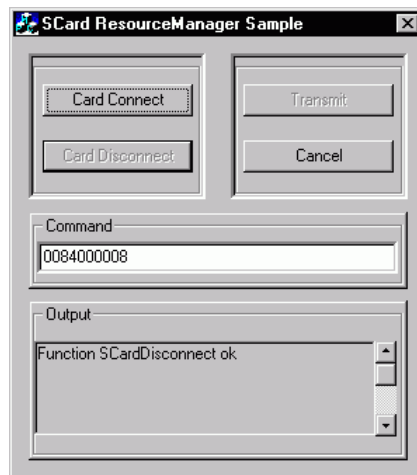


Figure 1.5 Disconnect the connection