

Installing/Uninstalling ePass2000_FT11 SDK (Software Development Kit)

Before using ePass2000_FT11, the software needs to be installed properly. This chapter describes how to install and uninstall ePass2000_FT11 SDK (Software Development Kit) under Windows® series operating systems.

This chapter will cover the following topics:

- Operating Systems Supported by ePass2000_FT11
- Installing ePass2000_FT11 SDK
- Uninstalling ePass2000_FT11 SDK

1. Operating Systems Supported by ePass2000_FT11

ePass2000_FT11 currently supports the following Windows operating systems:

- Windows 98 SE
- Windows Me
- Windows 2000
- Windows XP
- Windows 2003

Note: Users could find the initial PIN from the product's package or from the product vendor.

2. Installing ePass2000_FT11 SDK

ePass2000_FT11 SDK setup will install the following components on your computer:

- ePass2000_FT11 SDK documentation
- ePass2000_FT11 header and library files
- ePass2000_FT11 runtime environment redistribution package
- ePass2000_FT11 samples

Note: Please make sure the old version of ePass2000_FT11 SDK has been uninstalled before a new installation.

Insert the installation CD into the CD-ROM drive, and run “Setup.exe” to start the installation program (“program”). Program will enter the Welcome window, as shown in Figure 1.

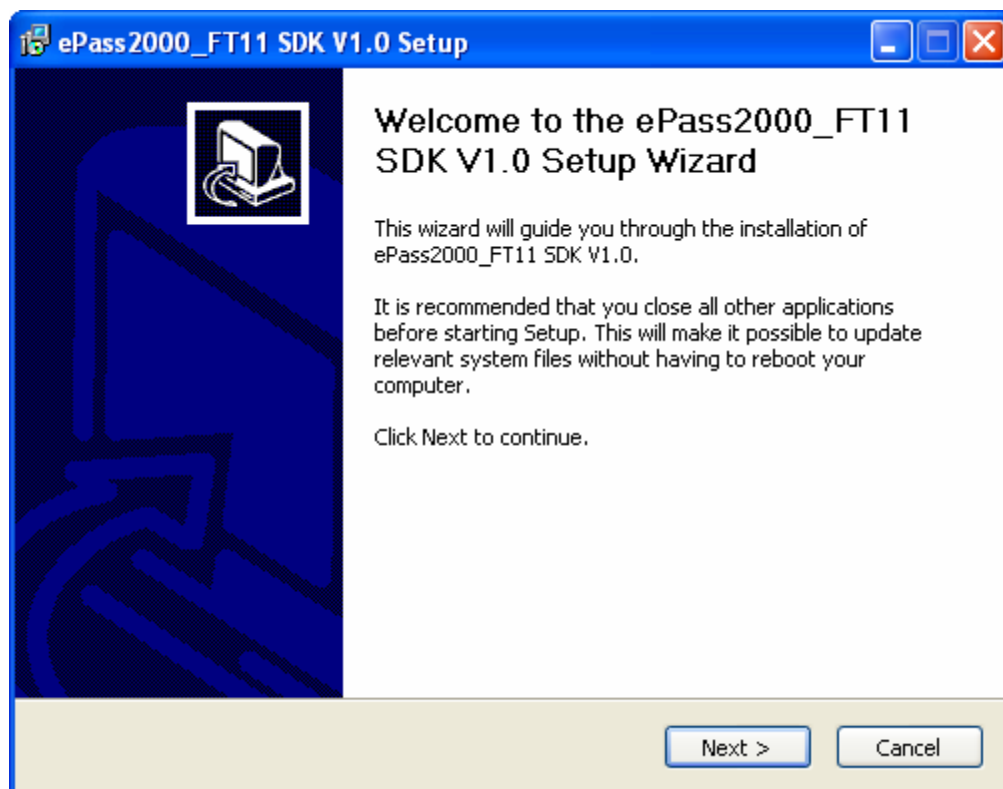


Figure 1

Click “Next” to continue. Program will enter the License Agreement window, as shown in Figure 2.

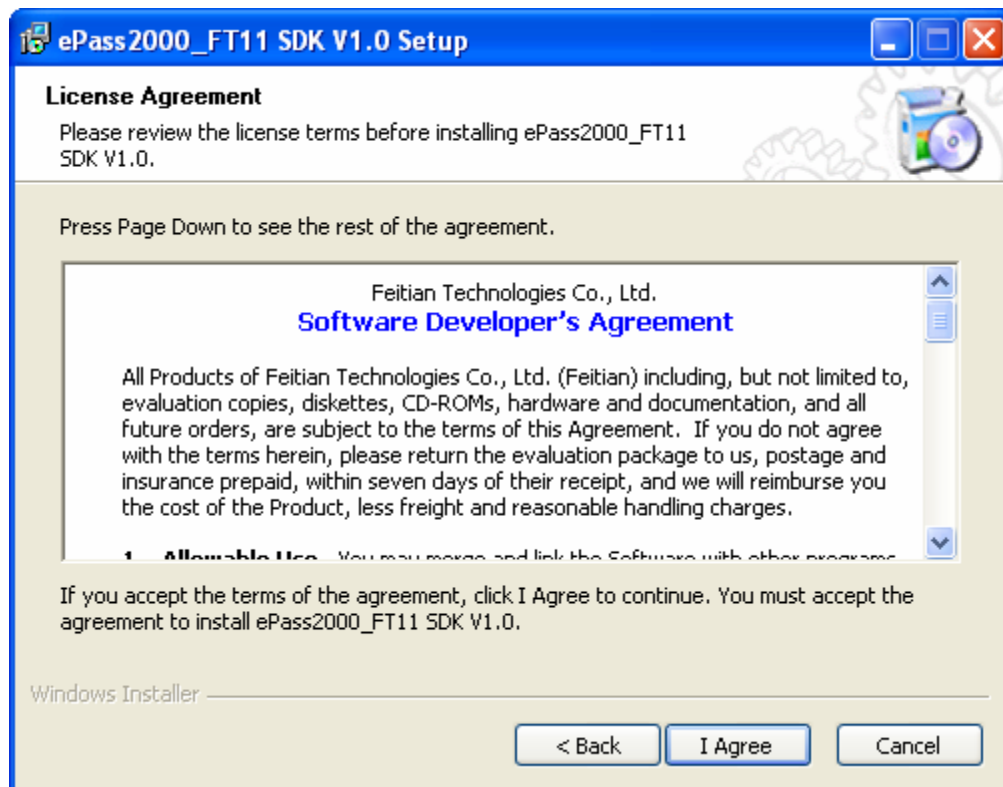


Figure 2

Please read the software developer's agreement carefully. If you accept this agreement, click "I Agree" and then program will enter the Components Selection window, as shown in Figure 3.

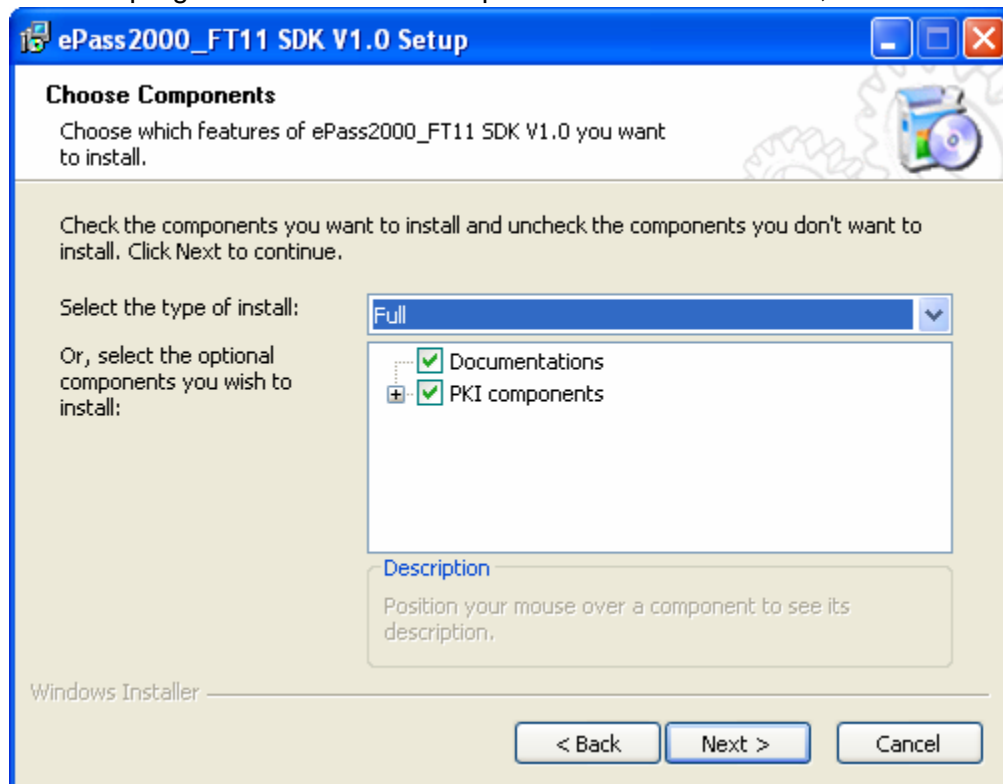


Figure 3

Program lists all the SDK components. Users could customize the installation or choose full installation, then click “Next” to continue. Program will enter the Installation Location Selection window, as shown in Figure 4.

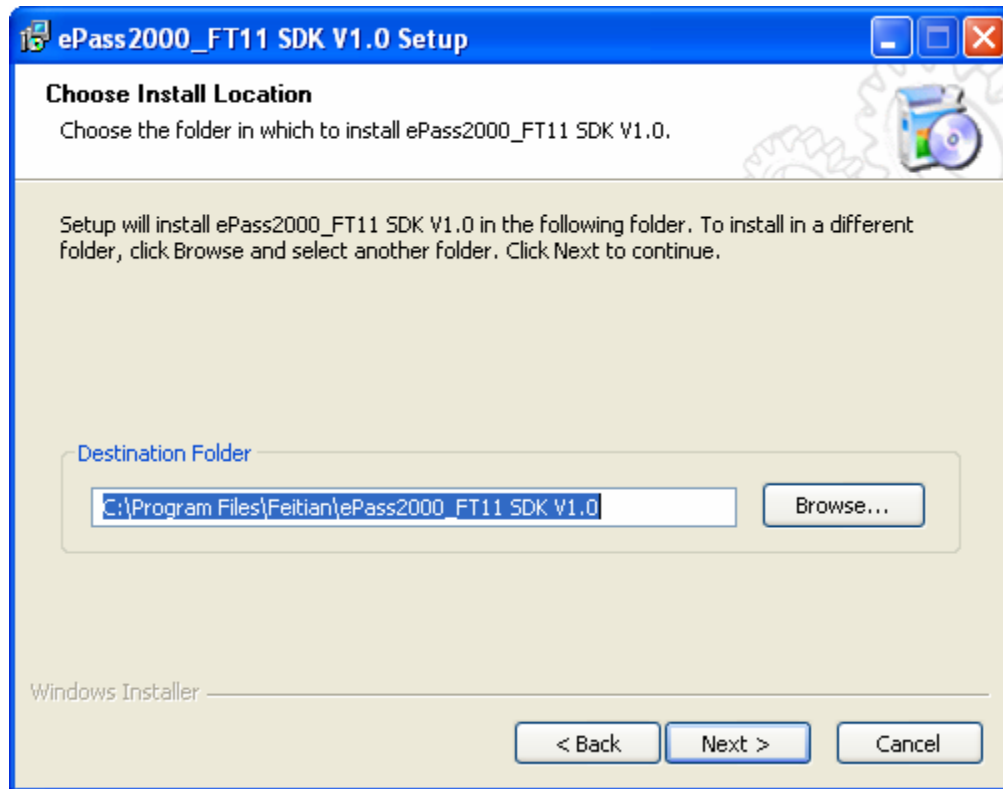


Figure 4

Please choose the SDK's installation location. Users can either use the default location or click “Browse” to choose another location. Then click “Next” to continue. The “Start Menu Folder” window will be shown as in Figure 5. SDK's shortcuts will be created in the selected folder.

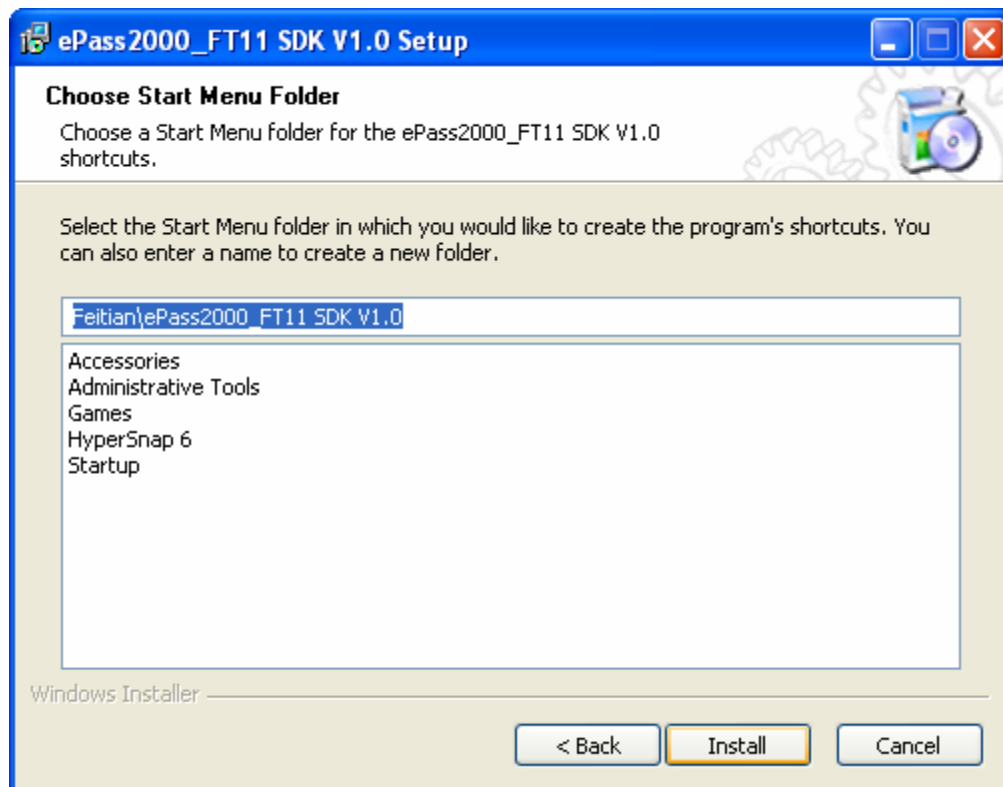


Figure 5

Finally click "Install" to perform the installation. When finished, the following window will appear, as shown in Figure 6.

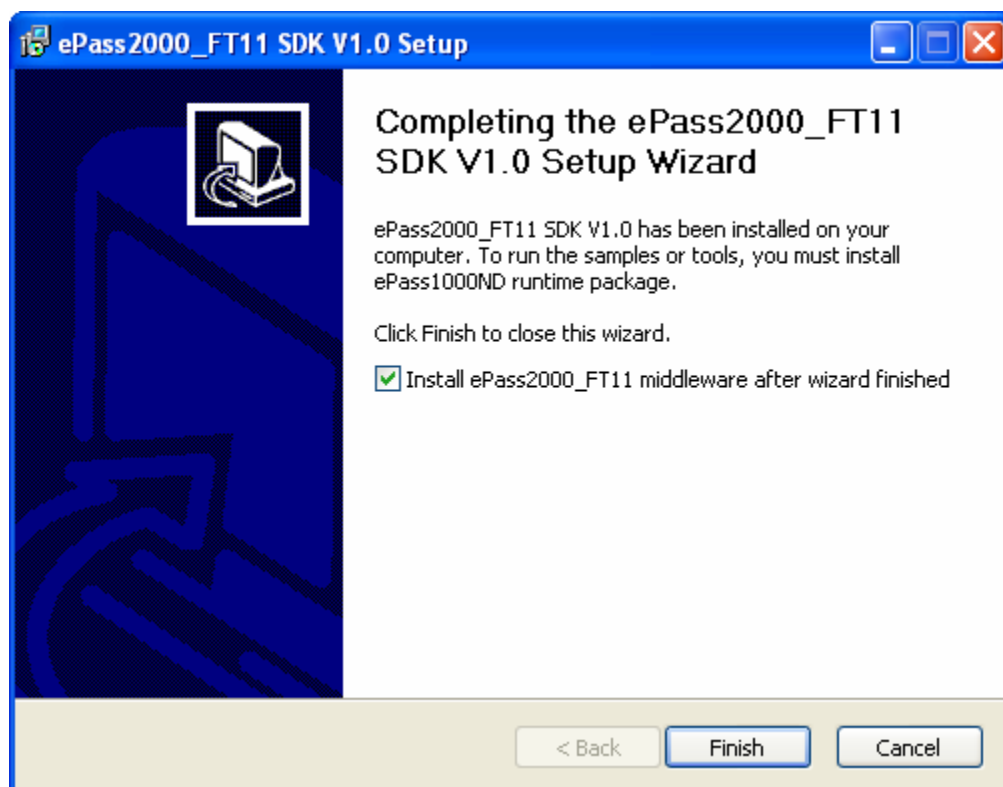


Figure 6

If “Install ePass2000_FT11 middleware after wizard finished” checkbox is checked, program will start the ePass2000_FT11 runtime package installation automatically after finishing.

3. Uninstalling ePass2000_FT11 SDK

The procedure to uninstall ePass2000_FT11 SDK is similar to uninstalling other application software. Users can use “Add or Remove Programs” from the control panel, as shown in Figure 7.

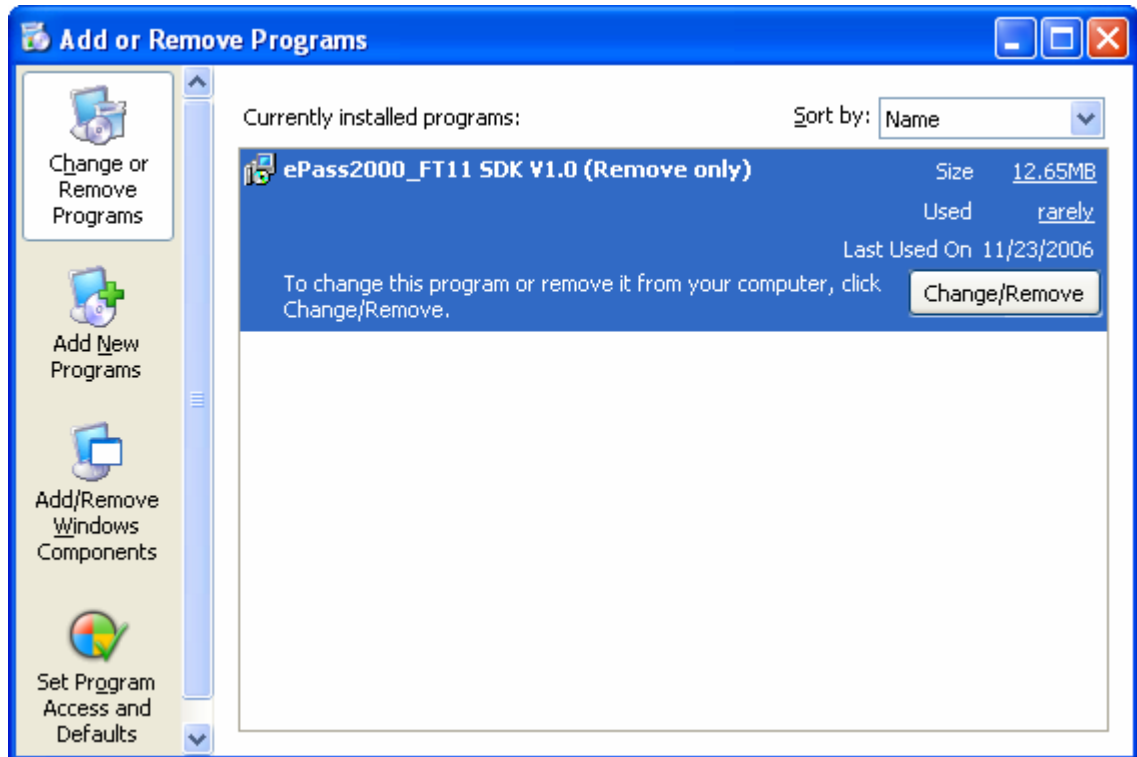


Figure 7

Click “Change/Remove” to start the ePass2000_FT11 uninstallation. The program starts, as shown in Figure 8.

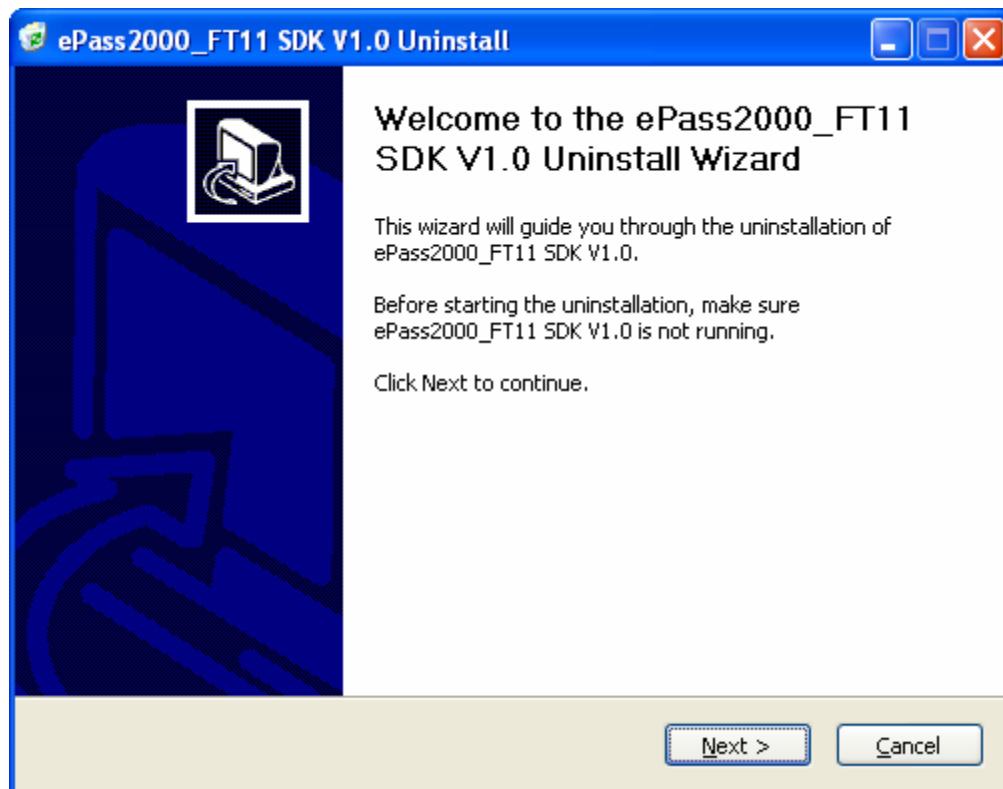


Figure 8

Click “Next” to continue. The location of the installed SDK will be listed, as shown in Figure 9.

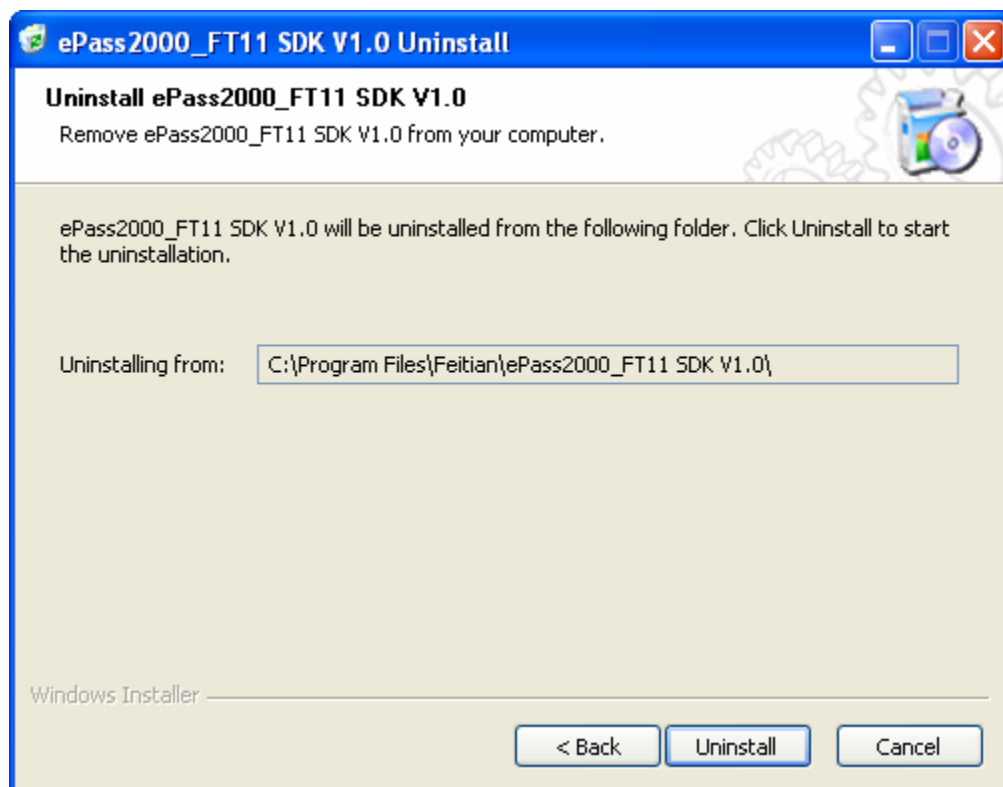


Figure 9

Click "Uninstall" to start uninstallation. After finished, the Completion window will appear, as shown in Figure 10.

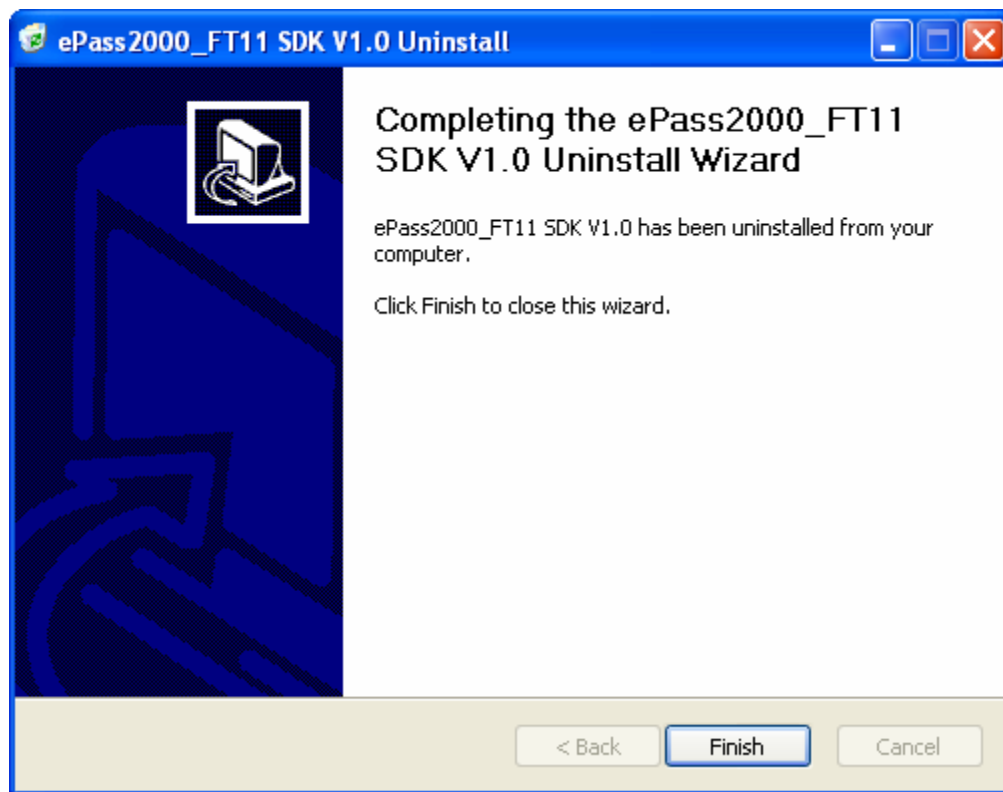


Figure 10

Click "Finish" to finish uninstallation.