

Installing/Uninstalling ePass2000_FT12 Runtime Package

This chapter will cover the following topics:

- Operating Systems Supported by ePass2000_FT12
- Preparing for Installing ePass2000_FT12 Runtime Package
- Installing ePass2000_FT12 Runtime Package
- Uninstalling ePass2000_FT12 Runtime Package

1. Operating Systems Supported by ePass2000_FT12

ePass2000_FT12 currently supports the following Windows® series operating systems:

- Windows 98 SE
- Windows Me
- Windows 2000
- Windows XP
- Windows 2003

2. Preparing for Installing ePass2000_FT12 Runtime Package

Before starting to install ePass2000_FT12 runtime package, please ensure that:

- Operating system is one of the supported systems listed above;
- Computer has at least one USB port available;
- Computer's BIOS supports USB devices and its USB supporting functionality is enabled in CMOS;
- USB extension cable or USB Hub (optional) is available;
- ePass2000_FT12 Token is available.

3. Installing ePass2000_FT12 Runtime Package

Make sure to install ePass2000_FT12 runtime package before using ePass2000_FT12. Double-click epsft12_stdEnglish.exe to start the setup program ("program"). Program enters the Welcome window, as shown in Figure 1:

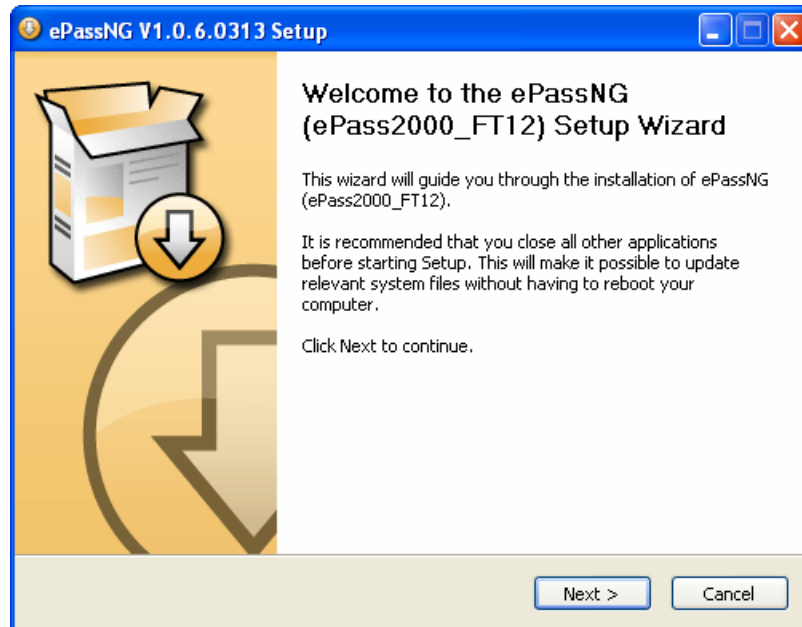


Figure 1

Click "Next" to enter the Smartcard options window, as shown in Figure 2:

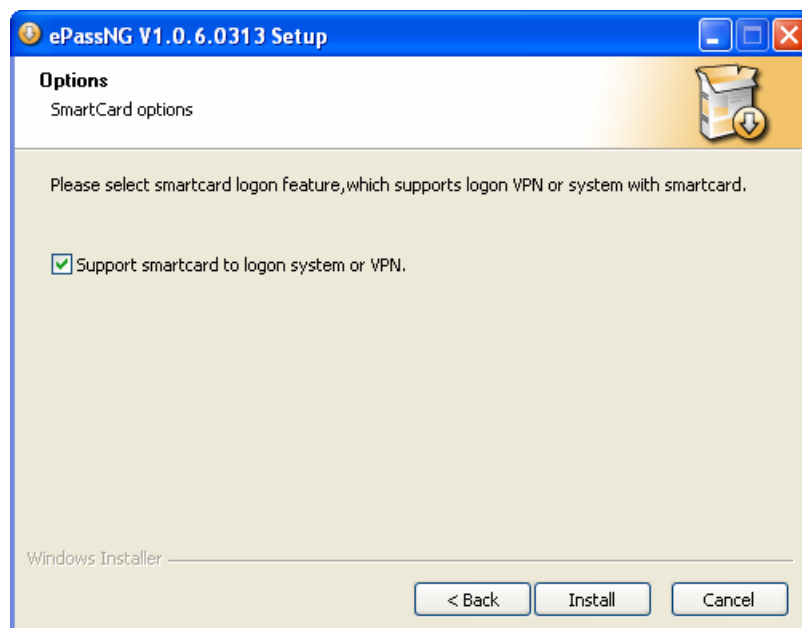


Figure 2

Click "Install" to start the installation, as shown in Figure 3:

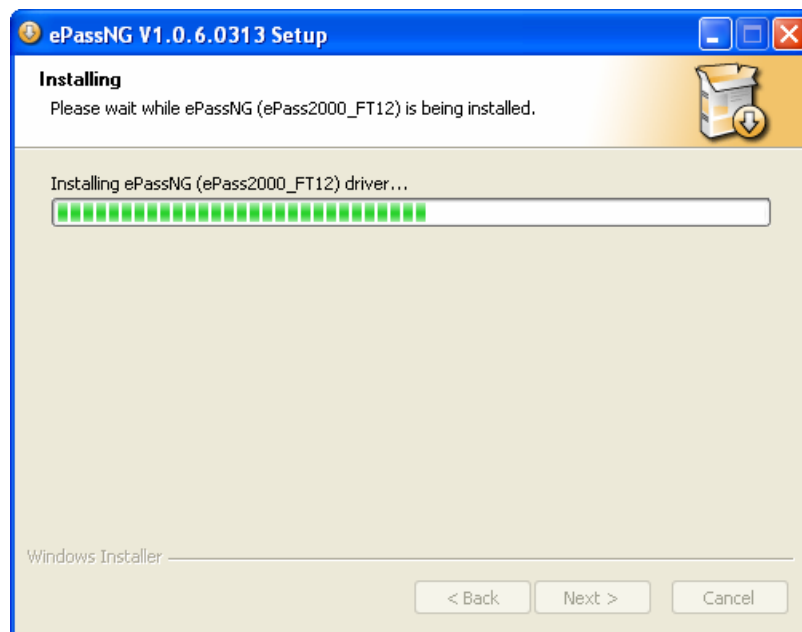


Figure 3

After the installation has finished, program shows the Completion window, as shown in Figure 4:

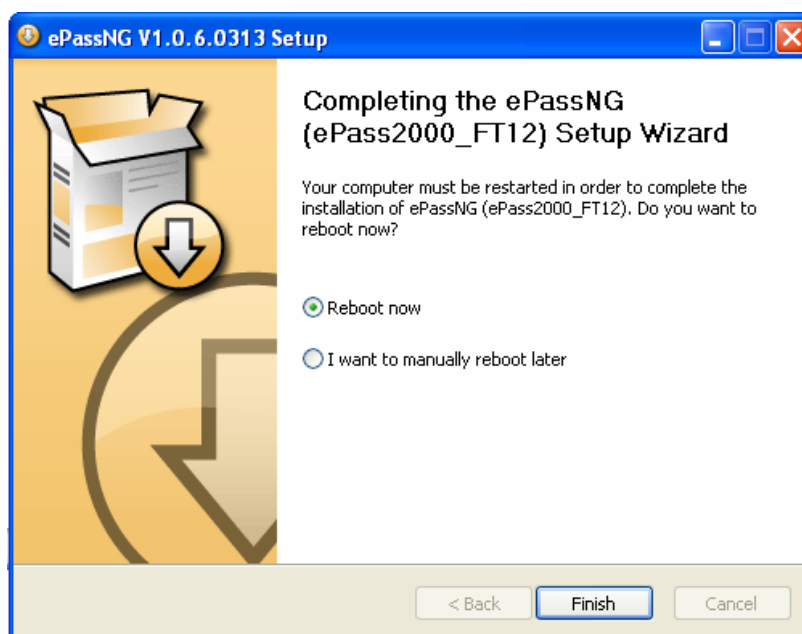


Figure 4

Click "Finish" to continue. The program will restart the system. The installation is completed now.

4. Uninstalling ePass2000_FT12 Runtime Package

To uninstall ePass2000_FT12 runtime package, use “Add or Remove Programs” in the control panel.

Open the control panel by clicking “Start” > “Control Panel” and then double-click “Add or Remove Programs”, choose “Choose ePassNG(ePass2000_FT12) (Remove only)” and press “Change/Remove” button. The uninstall program will start, as shown in Figure 5:

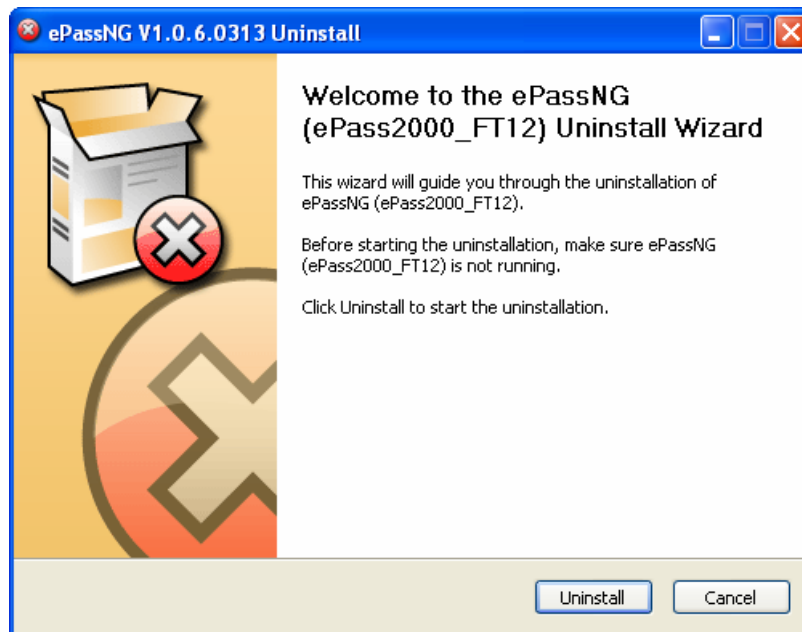


Figure 5

Click “Uninstall” to continue. The following window appears, as shown in Figure 6:

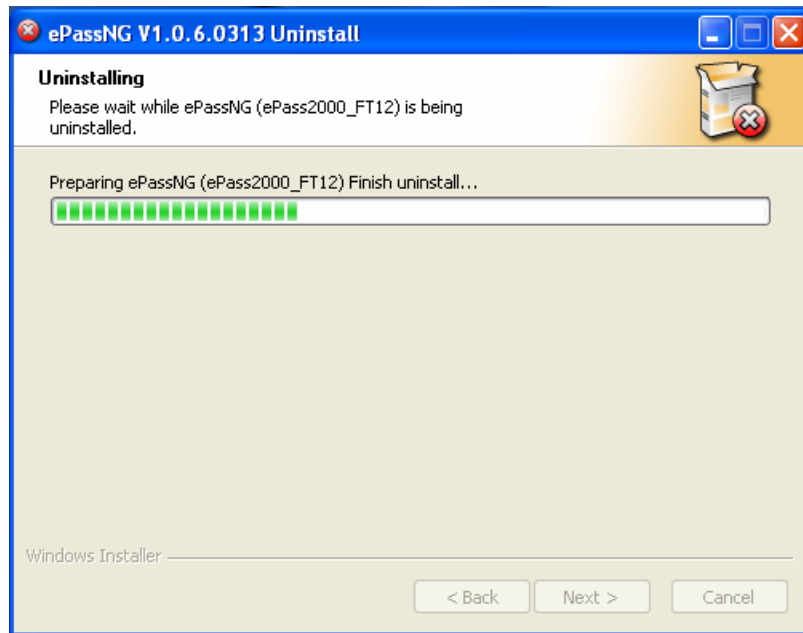


Figure 6

After the uninstallation has finished, the uninstall program will show the Completion window, as shown in Figure 7:

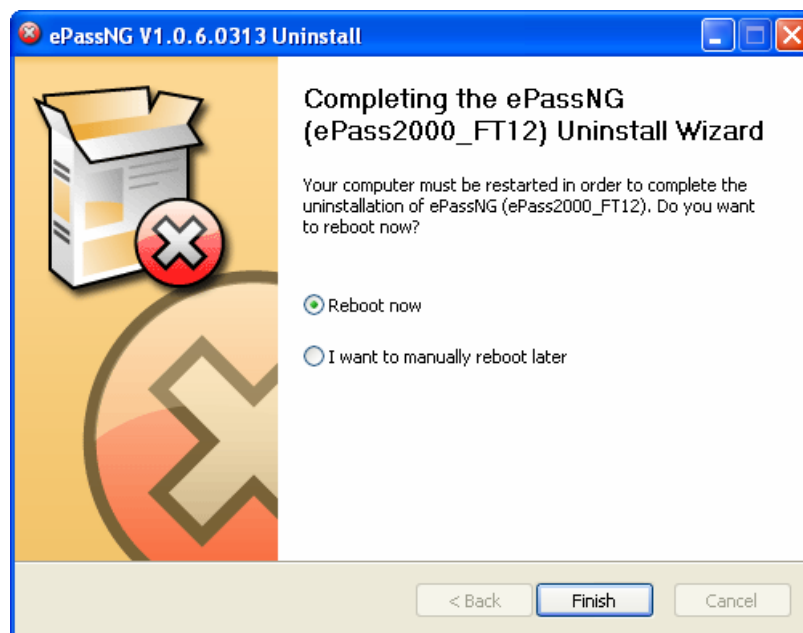


Figure 7

Click "Finish" to continue. The program will restart the system. The uninstallation is completed now.